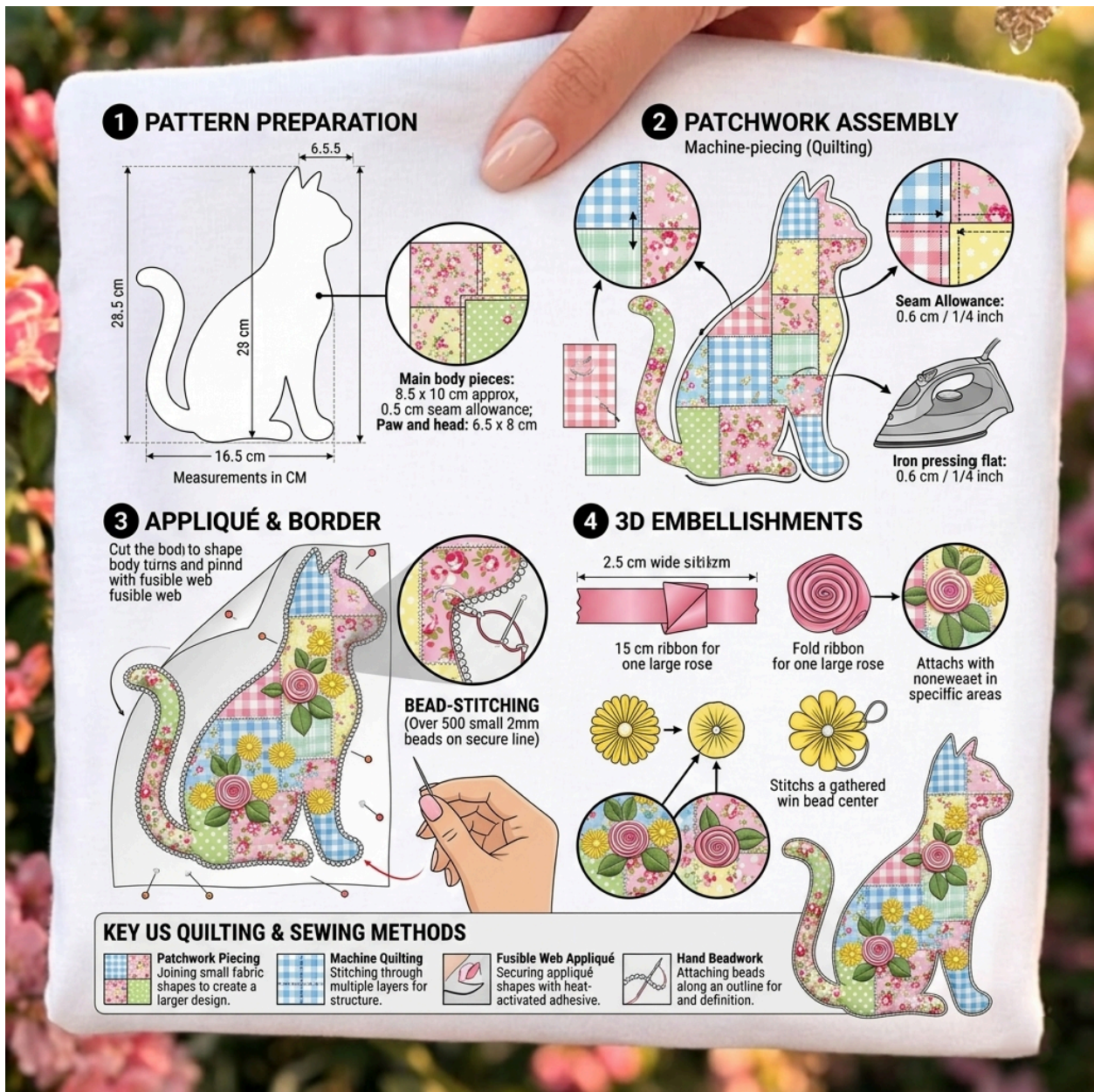


Fabric Cat - PATTERN



Pattern Preparation (Step 1)

To begin this beautiful patchwork cat project, start by preparing your template carefully. This step is essential because it defines the final shape and proportions of your piece.

First, draw or print a cat silhouette using the following measurements:

- Total height: **28.5 cm**
- Body height: **23 cm**
- Width (base): **16.5 cm**
- Head width: **6.5 cm**

Make sure your lines are smooth, especially around the tail and ears, as these curves will guide your cutting later. Transfer this template onto sturdy paper or cardstock so it can be reused.

Next, prepare your fabric pieces. For the patchwork:

- Cut small squares approximately **8.5 x 10 cm**
- Include a **0.5 cm seam allowance** on all sides
- For the paw and head areas, prepare smaller pieces around **6.5 x 8 cm**

Choose a mix of floral, gingham, and pastel fabrics to achieve that soft, vintage patchwork look. Cotton fabric works best because it's easy to sew and press.

Lay out your fabric pieces before sewing to visualize the color distribution. This helps avoid clustering similar colors in one area.



Patchwork Assembly (Step 2)

Now it's time to build the patchwork that will fill your cat shape.

Start by sewing your small fabric squares together using a sewing machine:

- Place two squares right sides together
- Sew using a **0.6 cm (1/4 inch) seam allowance**
- Continue joining pieces until you create a panel large enough to cover the entire cat template

Press each seam flat with an iron as you go. This is very important to keep your patchwork neat and prevent bulk.

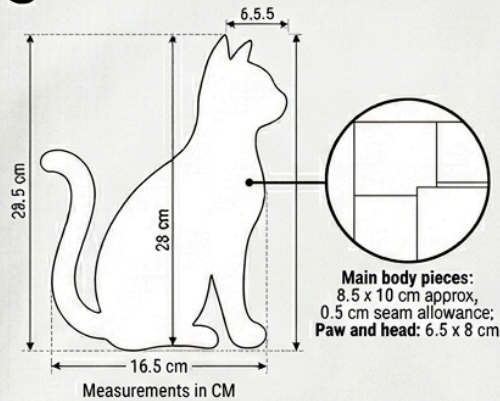
Once your patchwork panel is ready:

- Place the cat template on top
- Trace the shape carefully
- Cut the patchwork following the outline

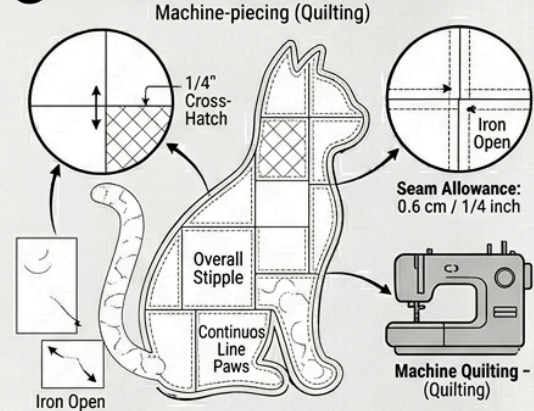
You should now have a full patchwork cat silhouette.

QUILTING & ASSEMBLY LAYOUT PLAN

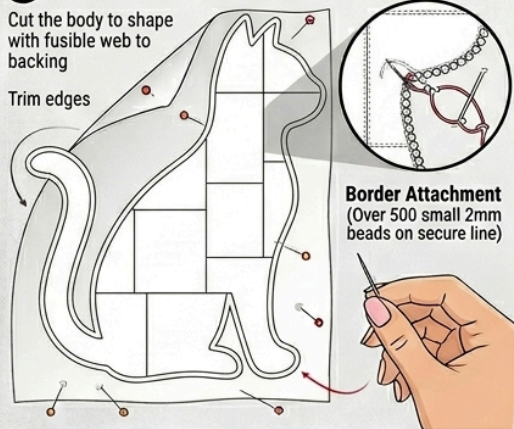
1 PATTERN & BLOCK PREPARATION



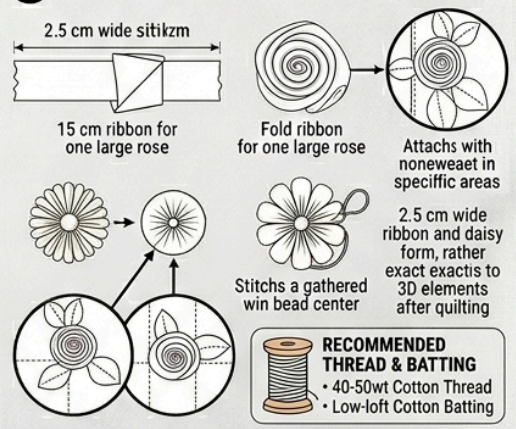
2 QUILTING STITCH & SEAM PLACEMENT



3 BORDER & ATTACHMENT DETAILS



4 3D EMBELLISHMENT PLACEMENT GUIDE



KEY US QUILTING & SEWING METHODS



✂️ Appliqué & Border (Step 3)

In this step, you will attach your patchwork cat onto a base fabric and refine its edges.

Start by preparing your base fabric (a neutral or light background works best). Then:

- Place **fusible web** on the back of your patchwork cat
- Follow the manufacturer's instructions to activate it with heat
- Position the cat onto your base fabric and press with an iron to secure it

Once attached, reinforce the edges:

- Use a tight zigzag stitch or blanket stitch around the entire cat shape
- Sew slowly, especially around curves like the tail and ears

Now for the decorative outline:

- Use a needle and thread to add **bead-stitching**
- Sew small **2mm beads** along the edge of the cat
- This may require over **500 beads**, so take your time and keep spacing even

This step adds texture and a refined handmade finish.

3D Embellishments (Step 4)

This is where your project truly comes to life with dimensional details.

Ribbon Roses

- Cut a ribbon **2.5 cm wide**
- Use about **15 cm length** for one large rose
- Fold and roll the ribbon tightly from one end
- Stitch the base to secure the shape

Attach the rose to the cat's body using needle and thread.

Fabric Flowers

- Cut small fabric circles
- Gather the edges with a running stitch
- Pull tightly to form a flower shape
- Add a bead in the center for detail

Leaves

- Cut small leaf shapes from green fabric
- Slightly fold or stitch the center to give dimension
- Attach around the flowers for a natural look

Secure all embellishments firmly, especially if the piece will be handled ხშირად.

Finishing Touches

Once all elements are attached:

- Give the entire piece a final press (avoid direct heat on beads and ribbon)
- Trim excess threads
- Optionally add batting and backing if turning this into a quilt block, wall hanging, or cushion cover

Key Techniques Used

- Patchwork piecing: joining small fabric pieces into a larger design
- Machine quilting: stitching through layers for structure
- Fusible appliqué: attaching shapes using heat-activated adhesive
- Hand beading: adding decorative beads for detail and texture

Final Tips

Take your time with each step—this project is all about precision and detail. If you're a beginner, practice sewing small squares and curves before starting. The combination of patchwork, appliqué, and embellishment makes this a rewarding project for all skill levels.

By following this guide carefully, you'll be able to recreate this charming patchwork cat from start to finish with confidence 🐾