



♥ CROCHET ♥ OFF-SHOULDER DRESS

STEP-BY-STEP TUTORIAL

A romantic, frilly dress with scalloped lace perfect for your little princess! ♥

FINISHED SIZE	MATERIALS	TOOLS	YOU WILL MAKE
Approx. For 3-4 years old Chest: 56-60 cm (22-23.5 in) Dress length (front): 45 cm (17.7 in) Dress length (back): 60 cm (23.6 in)	<ul style="list-style-type: none"> Cotton yarn (medium weight) <ul style="list-style-type: none"> Main color (green): 400 g Accent color (white): 120 g Crochet hook: 3.5 mm (E-4) Yarn needle Scissors Stitch markers Elastic (optional for back): 2-3 cm Decorative bow/flower (optional) Basic sewing supplies 	<ul style="list-style-type: none"> Crochet hook Scissors Yarn needle Stitch markers Measuring tape 	A beautiful off-shoulder dress with a lace ruffle top, a textured bodice, and a scalloped high-low skirt. Adorned with a lovely bow and flower — perfect for any special occasion!

PATTERN OVERVIEW	TOP (BODICE + RUFFLE)	SKIRT (LACE PATTERN)	ABBREVIATIONS (US TERMS)
The dress is made in 2 main parts: 1. Top (bodice + ruffle) 2. Skirt (front and back panels) Then we join them and add the finishing touches.			ch = chain sl st = slip stitch sc = single crochet hdc = half double crochet dc = double crochet tr = treble crochet dc:2tog = double crochet 2 together [] = repeat () = work in same stitch ** = repeat instructions between * * Gauge is not critical for this project.

YARN & COLOR GUIDE	STITCH GUIDE	NOTES
		<ul style="list-style-type: none"> ♥ Try on as you go! ♥ Adjust the bodice length and elastic for the perfect fit. ♥ Block your lace for a beautiful scalloped finish.

♥ STEP-BY-STEP INSTRUCTIONS ♥

1. MAKE THE BODICE (TEXTURED STITCH) <p>Ch to fit around the chest. Work in rows using dc (or hdc) in the back loop for a stretchy textured look.</p>	2. MAKE THE RUFFLE (LACE) <p>Work the lace ruffle pattern around the top edge. Join with sl st.</p>	3. ADD STRAPS <p>Ch a length for straps. Attach to front and back. Sew or crochet securely.</p>	4. JOIN RUFFLE & BODICE <p>Make sure the ruffle is evenly distributed. Fasten off and weave in ends.</p>	5. MAKE SKIRT (FRONT) <p>Work the lace pattern for the front panel (shorter length). Create the scalloped edge.</p>	6. MAKE SKIRT (BACK) <p>Work the lace pattern for the back panel (longer length). Make scalloped edge.</p>
7. JOIN SKIRT PANELS <p>Seam the sides of front and back panels (leave top open).</p>	8. ATTACH SKIRT TO BODICE <p>With right sides together, sew or slip stitch the skirt to the bodice.</p>	9. FINISH THE EDGES <p>Add white scalloped edge (optional) around the bottom of the skirt.</p>	10. ADD BOW & FLOWER <p>Attach the bow and flower at the waist. Sew securely.</p>	11. BLOCK YOUR DRESS <p>Lightly block the dress to open the lace and scalloped edges.</p>	12. FINAL LOOK! <p>Your beautiful crochet dress is ready to wear! ♥</p>

TIPS FOR SUCCESS	CARE INSTRUCTIONS	IDEAS & VARIATIONS	SIZE ADJUSTMENTS	PERFECT FOR
<ul style="list-style-type: none"> ♥ Use stitch markers to keep your lace pattern aligned. ♥ Count your stitches in each row for even edges. ♥ Block your lace for a neat and professional finish. 	<ul style="list-style-type: none"> 🧺 Hand wash gently in cold water. 📄 Lay flat to dry. 🚫 Do not bleach. 🧊 Iron on low if needed. 	<ul style="list-style-type: none"> ♥ Try pastel colors for a soft look. ♥ Add pearls or beads to the ruffle. ♥ Use ribbon for straps instead of crochet (optional). 	To adjust size: <ul style="list-style-type: none"> • Add or reduce chains for the bodice. • Add or reduce rows for the skirt length. 	<ul style="list-style-type: none"> ♥ Birthdays ♥ Weddings ♥ Photoshoots ♥ Special occasions

[SEE OTHER PATTERNS BY CLICKING >>HERE!!<<](#)

Crochet Off-Shoulder Dress

Create a beautiful crochet off-shoulder dress featuring a fitted bodice, romantic lace ruffle neckline, delicate shoulder straps, and a gorgeous high-low skirt. This project is perfect for birthdays, weddings, photoshoots, and special occasions.

Finished Size

Suitable for ages 3–4 years

- Chest: 22–23.5 inches (56–60 cm)
- Front Length: 17.7 inches (45 cm)
- Back Length: 23.6 inches (60 cm)

Skill Level: Intermediate

Materials

Yarn

Main Color (Sage Green)

- 440 yards (400 g)

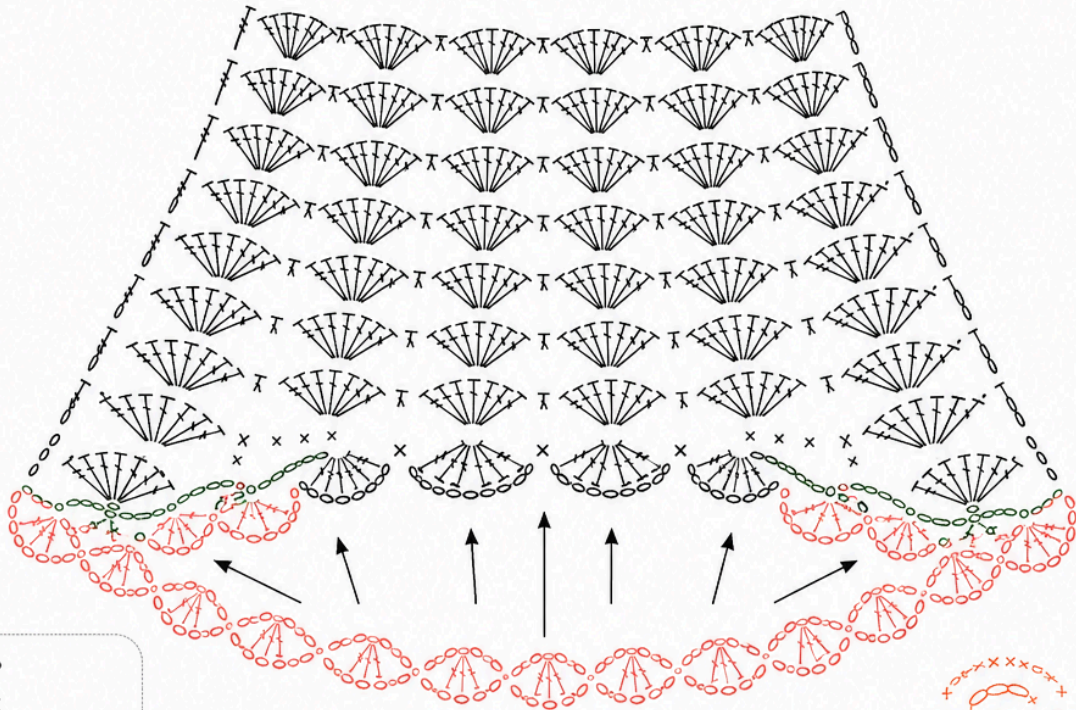
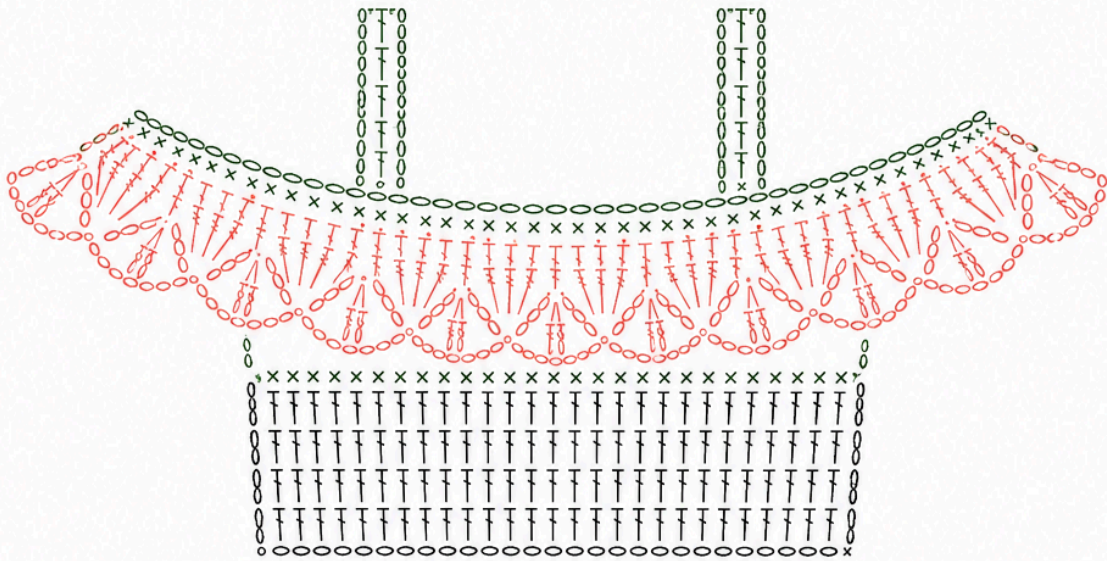
Accent Color (Cream/White)

- 130 yards (120 g)

Tools

- 3.5 mm (US E-4) crochet hook
- Yarn needle
- Scissors
- Stitch markers
- Measuring tape
- Elastic (optional)
- Decorative bow and flower embellishment (optional)

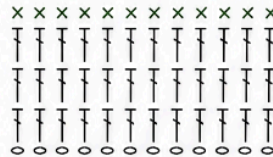
[SEE OTHER PATTERNS BY CLICKING >>HERE!!<<](#)



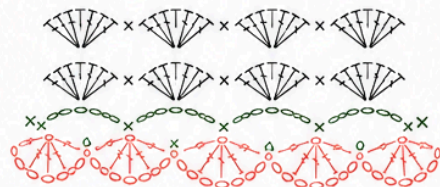
NECKLINE AND RUFFLE



BODICE



SKIRT AND HEM



Crochet Abbreviations (US Terms)

- ch = chain
- sl st = slip stitch
- sc = single crochet
- hdc = half double crochet
- dc = double crochet
- tr = treble crochet
- sk = skip
- st = stitch
- rep = repeat

Step 1: Measure and Create the Foundation Chain

Measure the child's chest.

For a 22–23.5 inch chest:

Chain approximately:

- 88–96 chains

Join carefully into a ring.

Make sure the chain is not twisted.

Place a stitch marker at the beginning of the round.

Step 2: Crochet the Bodice

The bodice should fit snugly around the chest.

Round 1

Ch 2

Work 1 dc in each chain around.

[SEE OTHER PATTERNS BY CLICKING >>HERE!!<<](#)

Join with sl st.

Round 2–12

Ch 2

Work 1 dc in each stitch around.

Join.

Continue until the bodice reaches:

- 5 inches (13 cm) tall

Try it on occasionally.

Adjust rows if needed.

Step 3: Add Textured Stitch Pattern

For additional texture:

Alternate:

Row A

1 dc in each stitch

Row B

Front post dc around each stitch

Repeat until desired height.

This creates the beautiful textured appearance shown in the dress.

Step 4: Create the Lace Ruffle Neckline

Join cream yarn at the top edge.

Foundation

Ch 1

Work:

[SEE OTHER PATTERNS BY CLICKING >>HERE!!<<](#)

- sc in first stitch
- ch 2
- skip 1 stitch

Repeat around.

Join.

Ruffle Row

Into each chain space work:

- 5 dc
- ch 1
- 5 dc

Skip to next space.

Repeat around entire neckline.

The lace will naturally begin to wave.

Step 5: Add a Second Lace Layer

For a fuller ruffle:

Work behind the first ruffle.

Create another round of chain spaces.

Repeat shell pattern.

The layered effect creates the elegant off-shoulder look.

Step 6: Create the Shoulder Straps

Attach yarn at the front bodice.

Strap

Ch 60

Turn.

Work 1 sc into each chain.

Fasten off.

Create second strap.

Finished strap length:

- 8–10 inches (20–25 cm)

Adjust to fit comfortably.

Step 7: Attach the Straps

Position straps evenly.

Attach to:

- Front bodice
- Back bodice

Sew securely using yarn needle.

Reinforce attachment points.

Step 8: Begin the Skirt

Join yarn at lower edge of bodice.

Increase evenly around.

Round 1

Work:

- 2 dc in first stitch
- 1 dc in next stitch

Repeat around.

This creates fullness.

Step 9: Establish Lace Pattern

Lace Repeat

Ch 3

Skip 2 stitches

Work 5 dc into next stitch.

Ch 3

Skip 2 stitches.

Repeat around.

This forms the decorative shell pattern.

Step 10: Shape the Front Skirt

The front section is shorter.

Continue lace pattern.

Work until front measures:

- 17.7 inches (45 cm)

Including bodice.

Fasten off.

Step 11: Shape the Back Skirt

The back section is longer.

Continue lace pattern rows.

Work until total length reaches:

- 23.6 inches (60 cm)

Including bodice.

This creates the beautiful high-low effect.

Step 12: Increase Fullness

Every 4th lace row:

Add extra shell motifs.

Example:

Instead of:

- Shell
- Shell
- Shell

Work:

- Shell
- Shell
- Shell
- Extra Shell

This creates a fuller flowing skirt.

Step 13: Create the Scalloped Hem

Join cream yarn.

Work into each shell space:

- 7 dc
- ch 1
- 7 dc

Repeat around.

The hem develops a soft scalloped edge.

Step 14: Add Second Decorative Border

For extra elegance:

Work:

- sc
- ch 3
- sc

Between scallops.

Repeat around.

This creates a delicate lace finish.

Step 15: Add Elastic (Optional)

For additional support:

Thread soft elastic through the top bodice edge.

Elastic width:

- $\frac{3}{4}$ –1 inch (2–3 cm)

Adjust gently.

Do not overstretch.

Step 16: Create the Decorative Bow

Using cream yarn or ribbon:

Create a bow approximately:

- 4 inches wide
- (10 cm)

Wrap center securely.

Attach flower embellishment.

Step 17: Attach Bow at Waist

Position bow:

- Front center waist
or
- Side waist

Hand sew securely.

Add pearl beads if desired.

Step 18: Weave in Ends

[SEE OTHER PATTERNS BY CLICKING >>HERE!!<<](#)

Using yarn needle:

Weave all yarn tails carefully.

Trim excess yarn.

Check all joins.

Step 19: Block the Dress

Lay dress flat.

Shape:

- Ruffles
- Scallops
- Lace pattern

Pin into position.

Allow to dry completely.

Blocking dramatically improves appearance.

Step 20: Final Inspection

Check:

- Straps secure
- Hem even
- Bow attached
- Lace open and symmetrical
- No loose ends

Press lightly with steam if needed.

Customization Ideas

Romantic Style

- Dusty rose yarn

[SEE OTHER PATTERNS BY CLICKING >>HERE!!<<](#)

- Ivory lace edging
- Pearl accents

Vintage Style

- Cream body
- Beige lace
- Satin ribbon bow

Princess Style

- Lavender
- White lace
- Rhinestone flower center

Boho Style

- Sage green
- Natural cream
- Wooden bead details

Care Instructions

- Hand wash only
- Cold water
- Mild detergent
- Do not bleach
- Lay flat to dry
- Store folded
- Light steam blocking if needed

Finished Dress

Your completed **Crochet Off-Shoulder Dress** features a fitted textured bodice, elegant lace ruffle neckline, comfortable shoulder straps, flowing high-low skirt, scalloped hem, and decorative waist bow. The finished piece is perfect for birthdays, weddings, family photos, parties, and special occasions, creating a timeless handmade garment that looks both delicate and luxurious.