

Denim Ruffle Blouse and Tiered Ruffle Skirt Sewing Tutorial

This charming two-piece outfit combines a classic denim button-front blouse with a romantic multi-tiered ruffle skirt. The combination of denim and floral fabrics creates a timeless country-inspired look perfect for spring, summer, family gatherings, photoshoots, or everyday wear.

Skill Level: Beginner to Intermediate

Seam Allowance: 3/8 inch (1 cm) already included in the pattern pieces.

Materials Needed

For the Blouse

- Lightweight denim fabric (1 yard / 0.9 m)
- Floral cotton fabric for ruffle (1/2 yard / 0.5 m)
- 3 buttons
- Matching thread
- Lightweight interfacing

For the Skirt

- Lightweight denim fabric (3/4 yard / 0.7 m)
- Floral cotton fabrics (1½ yards / 1.4 m total)
- Decorative lace trim (optional)
- Matching thread

Tools

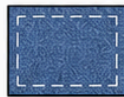
- Sewing machine
- Fabric scissors
- Pins or clips
- Measuring tape
- Iron
- Fabric marker

DENIM RUFFLE TOP (BLOUSE)

SEWING PATTERN



BUTTON PLACKET cut 2



PLACKET FACING cut 2



BUTTON (optional)

LEGEND

----- SEWING LINE

———— CUTTING LINE

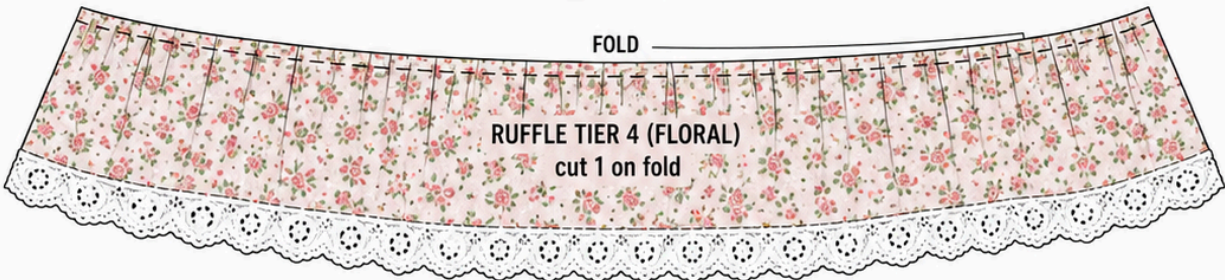
SCALE REFERENCE

0 1 2 3 4 5 6 7 8 9 10 cm

NOTE: SEAM ALLOWANCE 1 cm (3/8 in) INCLUDED

DENIM RUFFLE SKIRT

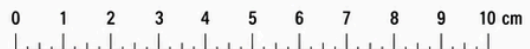
SEWING PATTERN



LEGEND

- SEWING LINE
- CUTTING LINE

SCALE REFERENCE



NOTE: SEAM ALLOWANCE 1 cm (3/8 in) INCLUDED

DIY RUFFLED DENIM OUTFIT

STEP-BY-STEP TUTORIAL

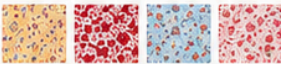
Turn old jeans and pretty cotton fabrics into an adorable ruffled outfit! A fun and beginner-friendly project.



MATERIALS

- Old jeans (adult jeans work great!)
- Cotton fabric 1 (floral – yellow)
- Cotton fabric 2 (floral – red)
- Cotton fabric 3 (floral – blue)
- Cotton fabric 4 (floral – pink)
- Lace trim (2.5–3 cm wide)
- Buttons (1–1.5 cm)
- Coordinating thread
- Elastic (2.5 cm wide)
- Fabric scissors
- Pins / clips
- Measuring tape
- Sewing machine
- Iron and ironing board

FABRIC SUGGESTION



Lightweight cotton fabrics work best.

FINISHED SIZE (Approx.)



*For 2–3 years old
(Adjust measurements as needed)

MATERIAL MEASUREMENTS (CM)

TOP (Vest/Dress Style)		SKORT (Shorts with Skirt Look)	
Part	Size (cm)	Part	Size (cm)
Denim (Top Front)	18 x 32	Denim (Shorts Front)	18 x 25
2 pcs		2 pcs	
Denim (Top Back)	18 x 32	Denim (Shorts Back)	18 x 28
1 pc (on fold)		2 pcs	
Fabric 1 (Yellow Ruffle)	60 x 9	Fabric 1 (Yellow Ruffle)	70 x 7
1 pc		1 pc	
Fabric 3 (Blue Ruffle)	60 x 12	Fabric 2 (Red Ruffle)	70 x 10
1 pc		1 pc	
Fabric 4 (Blue Floral)	60 x 15	Fabric 3 (Blue Ruffle)	70 x 12
1 pc		1 pc	
Lace Trim	60	Fabric 4 (Pink Floral)	70 x 15
2 pcs		1 pc	
Buttons	1–1.5 ∅	Lace Trim	70
4–5 pcs		2 pcs	
		Elastic (Waistband)	50 x 2.5
		1 pc	

* Add 1 cm seam allowance to all pieces.

STEP-BY-STEP INSTRUCTIONS

1 PREPARE & CUT

- Wash and dry the jeans.
- Remove waist, pockets, and unnecessary parts.
- Cut denim pieces according to the measurements.



2 MAKE THE RUFFLES

- Cut cotton fabric strips (see table above).
- Finish the short edges.
- Set your sewing machine to the longest stitch.
- Sew a gathering stitch along the top edge.
- Gently pull the bobbin threads to gather evenly.



3 ASSEMBLE THE TOP

- Sew the front pieces to the back at the shoulders seams.
- Finish the armholes and neckline with bias tape or facing.
- Sew the ruffles to the bottom of the top in this order: **Yellow (top) → Blue → Blue Floral.**
- Add lace trim along bottom.



4 ADD BUTTONS

- Fold the front edges inward 1 cm, then 1 cm again and sew.
- Topstitch for a neat finish.
- Mark and sew buttons evenly.



5 SEW THE SHORTS

- Sew the front and back shorts at the side seams and crotch.
- Finish the raw edges.
- Hem the leg openings (fold 1 cm, then 2 cm, and topstitch).



6 ATTACH THE RUFFLES

- Sew the ruffles to the shorts (bottom to top): **Pink Floral → Blue → Red → Yellow.**
- Add lace trim at the bottom.



7 MAKE THE WAISTBAND

- Fold the top edge inward 1 cm, then 3 cm, and sew, leaving a 3 cm opening to insert the elastic.
- Insert elastic and sew the opening closed.



8 FINAL TOUCH

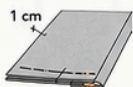
- Press everything with an iron.
- Trim loose threads.
- Your ruffled denim outfit is ready to go!



BASIC SEWING METHODS USED

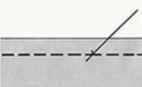
SEAM ALLOWANCE

Use 1 cm for all seams (unless noted).



STRAIGHT STITCH

Basic stitch for sewing seams.



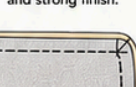
GATHERING STITCH

Use long stitch length (4–5 mm).



TOPSTITCHING

Sew close to the edge for a neat and strong finish.



HEM

Fold fabric edge and sew to finish.



INSERT ELASTIC

Insert elastic through the waistband opening.



PRESSING

Press seams flat for a clean professional look.



TIPS

- Pre-wash all fabrics to prevent shrinking.
- Use a denim needle (90/14) for best results.
- Press seams as you go for a professional finish.
- Mix and match fabric prints for your own style!



CARE INSTRUCTIONS



Handmade with love



PART 1 – DENIM RUFFLE BLOUSE

Step 1: Cut the Pattern Pieces

Cut:

- Front Left – Cut 1
- Front Right – Cut 1
- Back – Cut 1
- Front Ruffle – Cut 1
- Button Placket – Cut 2
- Placket Facing – Cut 2

Transfer all markings.

Press pieces flat before sewing.

Step 2: Prepare the Button Plackets

Fuse lightweight interfacing to the wrong side of the plackets.

Fold each placket lengthwise.

Press.

Attach the plackets to the center front edges.

Stitch carefully.

Topstitch 1/8 inch from both folded edges.

Press flat.

Step 3: Sew the Shoulder Seams

Place front pieces and back piece right sides together.

Pin shoulders.

Sew using a 3/8 inch seam allowance.

Finish seams with zigzag stitch or serger.

Press toward the back.

Step 4: Sew the Side Seams

Match side seams.

Pin carefully.

Sew from armhole to hem.

Finish raw edges.

Press seams open.

At this stage the basic blouse shape is complete.

Step 5: Finish the Neckline

Fold neckline edge under 1/4 inch.

Press.

Fold again 1/4 inch.

Topstitch around entire neckline.

Press carefully for a clean finish.

Step 6: Finish the Armholes

Fold armhole edge under 1/4 inch.

Press.

Fold again 1/4 inch.

Topstitch around both armholes.

Press flat.

Step 7: Create the Front Ruffle

The floral ruffle creates the decorative lower section.

Run two rows of gathering stitches along the top edge.

Pull threads gently until the ruffle matches the width of the blouse front.

Distribute gathers evenly.

Press lightly.

Step 8: Attach the Ruffle

Place gathered ruffle onto the lower front edge.

Pin carefully.

Sew in place.

Finish seam allowance.

Press seam upward.

Topstitch if desired.

The ruffle should fall softly with even gathers.

Step 9: Hem the Ruffle

Fold lower edge under 1/4 inch.

Press.

Fold again 1/4 inch.

Topstitch around entire ruffle.

Press for a neat finish.

Step 10: Create Buttonholes

Mark buttonhole placement evenly down the front left placket.

Create three buttonholes.

Open carefully.

Sew matching buttons onto the opposite side.

Test closure.

Step 11: Final Pressing

Press:

- Neckline
- Armholes
- Side seams
- Front plackets
- Ruffle seam

The blouse should now be complete.

Finished blouse length: approximately 14–18 inches depending on size.

PART 2 – DENIM RUFFLE SKIRT

Step 1: Cut the Pattern Pieces

Cut:

- Skirt Yoke/Waistband – Cut 1 on Fold
- Ruffle Tier 1 (Floral) – Cut 1 on Fold

- Ruffle Tier 2 (Denim) – Cut 1 on Fold
- Ruffle Tier 3 (Floral) – Cut 1 on Fold
- Ruffle Tier 4 (Floral) – Cut 1 on Fold

Transfer all fold markings.

Step 2: Prepare the Waistband

Fold waistband piece in half lengthwise.

Press.

Open and apply interfacing if desired.

Set aside.

Step 3: Prepare Tier 1

Sew side seam if needed.

Create gathering stitches along the upper edge.

Pull threads until the tier matches the lower edge of the waistband.

Distribute gathers evenly.

Step 4: Attach Tier 1 to Waistband

Pin gathered Tier 1 to waistband.

Sew carefully.

Finish seam allowance.

Press seam upward.

Step 5: Prepare Tier 2

Sew side seam.

Run gathering stitches along upper edge.

Gather until Tier 2 matches the lower edge of Tier 1.

Distribute gathers evenly.

Step 6: Attach Tier 2

Pin Tier 2 to Tier 1.

Sew.

Finish seam.

Press downward.

The skirt begins developing volume.

Step 7: Prepare Tier 3

Join side seam.

Create gathering stitches.

Gather until Tier 3 matches Tier 2.

Distribute gathers evenly.

Pin carefully.

Step 8: Attach Tier 3

Sew Tier 3 to Tier 2.

Finish seam allowance.

Press downward.

The skirt should now appear full and flowing.

Step 9: Prepare Tier 4

Join side seam.

Create gathering stitches.

Gather to match Tier 3 width.

Pin carefully.

Step 10: Attach Tier 4

Sew Tier 4 to Tier 3.

Finish seam allowance.

Press downward.

This final tier creates the dramatic ruffled appearance.

Step 11: Add Lace Trim

Position lace along the lower edge of Tier 4.

Pin in place.

Sew carefully.

Topstitch if needed.

The lace creates a soft vintage finish.

Step 12: Finish the Waistband

Fold waistband over the seam allowance.

Press.

Turn inside.

Topstitch close to the folded edge.

Insert elastic if desired.

Alternatively install a button closure.

Step 13: Final Pressing

Press each tier gently.

Avoid flattening gathers.

Steam lightly for a professional finish.

Final Measurements

Blouse

- Chest: according to selected size
- Length: approximately 14–18 inches

Skirt

- Waist: according to selected size
- Length: approximately 18–24 inches

Styling Tips

Pair the completed outfit with:

- Sandals
- Ballet flats
- Denim jacket
- Straw hat
- Floral hair accessories

The finished Denim Ruffle Blouse and Tiered Ruffle Skirt Set creates a beautiful vintage-inspired outfit featuring soft gathers, floral fabrics, and classic denim details perfect for girls of all ages.