

Patchwork Leaf Coaster Tutorial



PATCHWORK LEAF COASTER

- STEP-BY-STEP TUTORIAL -

A quilted leaf-shaped coaster – perfect for your table or as a handmade gift! ❤️

FINISHED SIZE	MATERIALS	TOOLS	YOU WILL MAKE
<p>Approx. 16 cm x 12 cm (6.3 in x 4.7 in)</p>	<ul style="list-style-type: none"> • Cotton fabric (various colors/patterns) • Backing fabric (denim or cotton) • Batting (thin) • Bias tape or fringe trim (denim look) • Thread • Fabric glue (optional) • 1 fabric loop (approx. 4 cm / 1.6 in) • Basic sewing supplies 	<ul style="list-style-type: none"> 🧵 Sewing machine ✂️ Rotary cutter or scissors 📏 Ruler 🖍️ Fabric marker or chalk 🔪 Iron 📌 Pins or clips 🪡 Needle 🪄 Seam ripper (optional) 	<p>A quilted leaf coaster using patchwork techniques.</p> <p>Great for protecting your table in style!</p>

FABRIC CUTTING

Cut the following pieces (seam allowance 1/4 in (0.6 cm) is included):

- A 2 pcs – Denim (outer)
- B 1 pc – Yellow (accent)
- C 1 pc – Light Blue (checks)
- D 1 pc – Red (gingham)
- E 1 pc – Green (solid)
- F 1 pc – Floral (small print)
- G 1 pc – Light Denim (stripe)
- Back 1 pc – Backing fabric
- Batting 1 pc – Batting (thin)
- Loop 1 pc – Fabric loop (4 x 8 cm)



LAYOUT

Arrange the fabric pieces as shown. You can customize the colors and patterns as you like!



QUILTING

Quilt along the seam lines and add a few parallel lines in the denim areas if you like for extra texture.



STEP-BY-STEP TUTORIAL

1. PREPARE FABRIC

Cut all fabric pieces as listed. Iron all pieces nicely.



2. ARRANGE PATCHWORK

Place the fabric pieces on the denim front (A) as shown. Pin or clip in place.



3. SEW PATCHWORK

Sew the pieces onto the denim front. Press the seams toward the denim (A).



4. QUILT THE FRONT

Quilt along the seam lines. Add extra quilting lines in the denim areas if desired.



5. PREPARE BACKING

Place the backing fabric (right side down). Lay the quilted front on top (right side up).



6. LAYER & BASTE

Add the batting on top. Pin or clip all layers together.



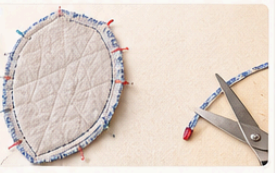
7. SEW AROUND

Sew around the leaf shape, leaving an opening (3-4 cm) for turning.



8. TRIM SEAM

Trim the seam allowance and clip curves to reduce bulk.



9. TURN RIGHT SIDE OUT

Gently turn the coaster right side out through the opening.



10. PRESS

Press the edges nicely. Tuck in the raw edges of the opening.



11. TOPSTITCH

Topstitch around the edge close to the fringe/bias tape. This closes the opening.



12. ADD FRINGE / BIAS

Attach bias tape or fringe trim around the edge. Sew in place.



13. ADD LOOP

Fold the loop in half. Insert it at the top center. Pin in place.



14. SECURE LOOP

Topstitch over the loop several times to secure it well.



15. FINAL TOUCH

Your patchwork leaf coaster is ready!



DETAILS TO NOTE



- ♥ Use 1/4 in (0.6 cm) seam allowance.
- ♥ Backstitch at the beginning and end.
- ♥ Press as you go for the best results.

IDEAS & USES



- ♥ Drink coasters
- ♥ Table decoration
- ♥ Housewarming gift
- ♥ Add a set of 4 or more in different colors!

CARE INSTRUCTIONS

- 🧺 Hand wash gently in cold water.
- 📏 Lay flat to dry.
- 🚫 Do not bleach.
- 🔪 Iron on low if needed.

TIPS FOR SUCCESS

- ✓ Use a walking foot for even quilting.
- ✓ Don't pull the fabric when sewing curves.
- ✓ Clip curves to help the coaster turn out nicely.
- ✓ Press well for a professional finish.

This charming patchwork leaf coaster combines quilting, patchwork piecing, and decorative edging to create a beautiful leaf-shaped coaster perfect for coffee tables, tea trays, fall décor, and handmade gifts. The design uses small fabric scraps, making it an excellent stash-busting project for quilters of all skill levels.

Finished Size: Approximately 6.3" × 4.7" (16 cm × 12 cm)

Skill Level: Beginner to Intermediate

Seam Allowance: ¼" (6 mm)

Materials Needed

Fabrics

- Denim fabric (main background)
- Yellow cotton print
- Light blue checked fabric
- Red gingham fabric
- Green solid fabric
- Floral print fabric
- Light denim stripe fabric

Other Materials

- Cotton batting
- Backing fabric
- Matching thread
- Bias tape or fringe trim
- Fabric marker
- Fabric glue (optional)

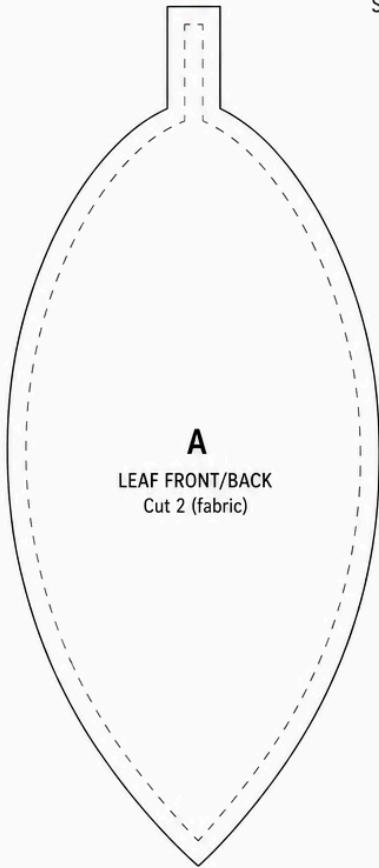
Tools

- Sewing machine
- Rotary cutter
- Quilting ruler
- Fabric scissors
- Pins or clips
- Iron
- Hand sewing needle

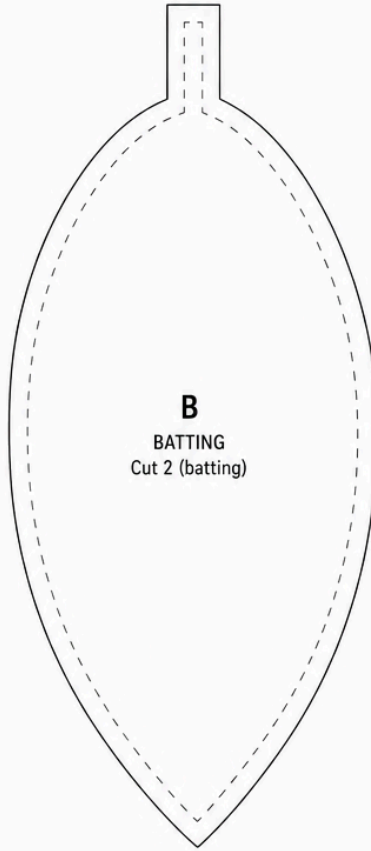
PATCHWORK LEAF COASTER – PATTERN

ALL PIECES – ACTUAL SIZE

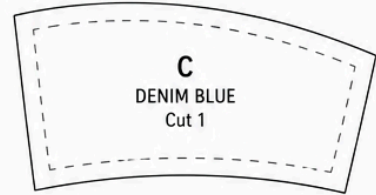
SEAM ALLOWANCE: 0.25 in (0.7 cm) INCLUDED



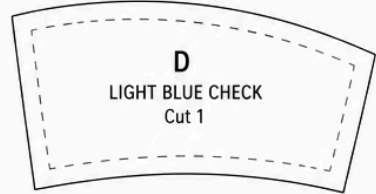
A
LEAF FRONT/BACK
Cut 2 (fabric)



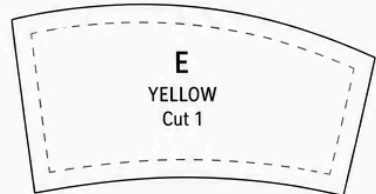
B
BATTING
Cut 2 (batting)



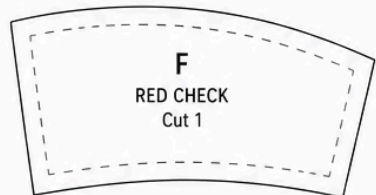
C
DENIM BLUE
Cut 1



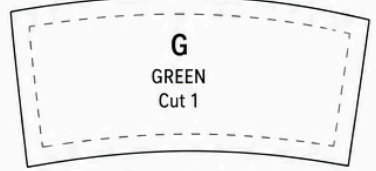
D
LIGHT BLUE CHECK
Cut 1



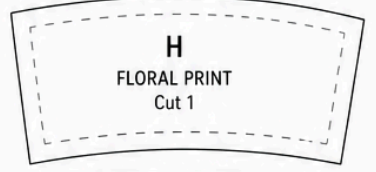
E
YELLOW
Cut 1



F
RED CHECK
Cut 1



G
GREEN
Cut 1



H
FLORAL PRINT
Cut 1



I
DARK BLUE
Cut 1



J
DENIM BLUE (BOTTOM)
Cut 1



K
BINDING STRIP (FRAYED EDGE)
Cut 2



L
HANGING LOOP
Cut 1



--- SEWING LINE
— CUTTING LINE

Finished Measurements

The completed leaf coaster should measure:

- Height: 16 cm (6.3")
- Width: 12 cm (4.7")

Step 1: Create the Leaf Template

Draw or print a leaf template measuring:

- 16 cm tall
- 12 cm wide

Add a small stem at the top:

- 4 cm long
- 1.5 cm wide

Cut out the template.

This template will be used for all layers.

Step 2: Cut the Patchwork Fabrics

Cut the following pieces:

Piece A – Main Denim

- 1 piece
- 16 cm × 12 cm

Piece B – Yellow Accent

- 3 cm × 6 cm

Piece C – Blue Check

- 3 cm × 5 cm

Piece D – Red Gingham

- 2.5 cm × 6 cm

Piece E – Green Accent

- 2 cm × 5 cm

Piece F – Floral Print

- 3 cm × 6 cm

Piece G – Light Denim Stripe

- 2 cm × 5 cm

These dimensions are approximate and may be adjusted slightly while assembling.

Step 3: Press All Fabrics

Iron all pieces thoroughly.

Flat fabric produces cleaner seams and more accurate patchwork.

Step 4: Arrange the Patchwork Design

Place the denim background piece on your work surface.

Arrange the smaller fabric strips diagonally across the leaf shape as shown.

Suggested arrangement:

- Red gingham near the center
- Green strip below
- Yellow strip toward the upper right
- Floral strip near the lower section
- Blue checks beside the yellow strip

Experiment until the layout feels balanced.

Step 5: Sew the Patchwork Sections

Begin joining neighboring strips.

Use:

- ¼" seam allowance

After each seam:

- Press open
- Or press toward the darker fabric

Continue until one complete patchwork panel is created.

The panel should be slightly larger than the leaf template.

Step 6: Trim to Leaf Shape

Place the leaf template on the patchwork panel.

Trace around it.

Cut carefully.

You should now have one completed patchwork leaf front.

Step 7: Quilt the Front Panel

Place batting behind the patchwork front.

Pin securely.

Quilt along the seam lines.

Add additional quilting:

- Parallel lines
- Echo quilting
- Diagonal stitching

Spacing:

- Approximately ½" (1.2 cm)

This creates texture and stability.

Step 8: Cut the Backing

Using the leaf template:

Cut:

- 1 backing leaf
- 1 batting leaf

All layers should match perfectly.

Step 9: Create the Hanging Loop

Cut fabric strip:

- 4 cm × 8 cm

Fold lengthwise.

Sew long edge.

Turn right side out.

Press flat.

Fold into a loop.

Finished loop size:

- Approximately 1½" (4 cm)

Step 10: Layer the Coaster

Place layers in this order:

1. Patchwork front (right side up)
2. Batting
3. Backing (right side down)

Insert the loop between layers at the stem area.

Pin thoroughly.

Step 11: Sew Around the Shape

Using a ¼" seam allowance:

Sew around the entire leaf.

Leave an opening:

- 3–4 cm (1¼–1½")

Do not sew the opening closed yet.

Step 12: Clip Curves

Carefully clip around the curved edges.

Do not cut through stitching.

This helps the coaster lie flat after turning.

Step 13: Turn Right Side Out

Turn the coaster through the opening.

Use a blunt tool to shape:

- Leaf tip
- Stem
- Curved sides

Push corners gently.

Step 14: Press Carefully

Press the coaster flat.

Fold the raw edges of the opening inward.

Press again.

The shape should now be smooth and crisp.

Step 15: Topstitch the Edge

Topstitch around the entire coaster.

Distance from edge:

- 1/8" (3 mm)

This:

- Closes the opening
- Adds durability
- Defines the leaf shape

Step 16: Add Decorative Leaf Veins

Using matching thread:

Stitch a center vein from stem to tip.

Then add angled side veins.

Suggested spacing:

- 1–1½ cm apart

These quilting lines enhance the leaf appearance.

Step 17: Attach Bias Tape or Fringe Trim

If desired, add decorative edging.

Pin the trim around the leaf perimeter.

Sew slowly around curves.

Overlap ends neatly.

This creates the textured border shown in the sample.

Step 18: Secure the Loop

Topstitch across the stem area several times.

This strengthens the hanging loop.

Step 19: Final Pressing

Give the coaster one final press.

Trim loose threads.

Check all stitching.

Ensure edges lie flat.

Care Instructions

- Hand wash or gentle machine wash
- Cold water only
- Lay flat to dry
- Do not bleach
- Iron on low heat if needed

Finished Project Ideas

Your Patchwork Leaf Coaster can be used as:

- Coffee mug coaster
- Tea cup coaster
- Table decoration
- Fall-themed décor
- Gift set
- Housewarming present
- Mug rug collection
- Hanging kitchen decoration

The finished coaster combines colorful patchwork fabrics, beautiful quilting texture, and an elegant leaf silhouette, creating a practical and decorative project that can be completed in just a few hours.